

American Dynamics DVR Integration

Basic Functionality

The DVR integration allows the local workstation to view stored and live video from the Access It! Universal .NET software.

Compatibility

The American Dynamics DVR Integration is compatible with:

- Access It! Universal version 5.x.x.x and higher
- VideoEdge NVR V4.8 and previous 4.xx versions
- Intellex DVR V5.0 and previous versions
- Hybrid DVR V1.5 and previous versions
- ADTVR v2.2, v2.5 and v2.6

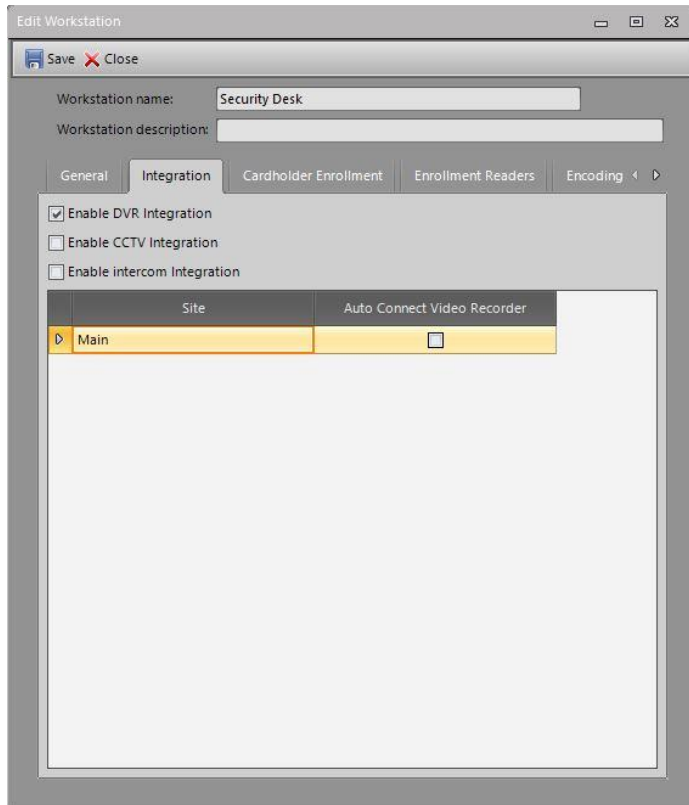
Software Setup

American Dynamics DVR Integration Setup

1. Extract RS2AmericanDynamics.zip
2. Run and install each executable in the Redist folder, if necessary.
3. Run ADSDKRedistFull.exe
4. Select a language
5. Click OK
6. Click Next, Next, Next, Next
7. Click Install
8. Click Finish
9. Run Setup.exe
10. After reviewing the software license agreement select I Agree
11. Click Next, Next, Next
12. Click Close.

Workstation

1. Navigate to the Workstation section by clicking on the Workstation toolbar button within the System group on the left-hand toolbar. Edit the Workstation that will be using the DVR integration
2. Under the Integration tab, select (check) the 'Enable DVR Integration for this workstation' option to enable DVR integration for the local workstation and click Save. Workstation must be restarted for this change to take effect.



Hardware Tree

Adding the DVR

1. Navigate to the Hardware group by clicking on the Hardware tab
2. Select Video Recorders
3. Select New from the menu
4. Select Other...
5. Navigate to C:\Program Files (x86)\RS2 Technologies\RS2 American Dynamics Viewer
6. Select RS2AmericanDynamics.dvr
7. Click Open
8. Select RS2 American Dynamics Viewer and click OK
9. Enter the Video recorder name, the DVR type (NVR or WNVR for VideoEdge, depending on configuration), Server address, User name, and Password
▲ For optional parameters, values only have to be assigned if the recorder is using non-default ports
10. Click Save

Adding Cameras

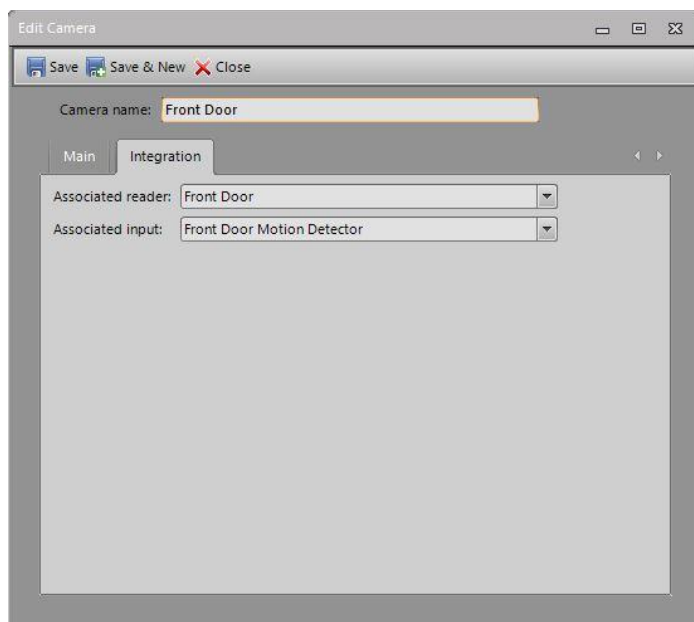
1. Navigate to the Hardware group by clicking on the Hardware tab
2. Select Video Recorders
3. Click on the American Dynamics Recorder
4. In the cameras section below, select New
5. Enter the Camera name, Camera number, and set Pre Event Seconds
6. Click Save
7. Repeat steps 4-6 to add additional cameras

Associating Devices

Cameras can be associated to inputs and readers in the Universal software. This can be done by editing the camera and associating it to the reader\input or by editing the reader\input and associating it with camera.

Editing the Camera:

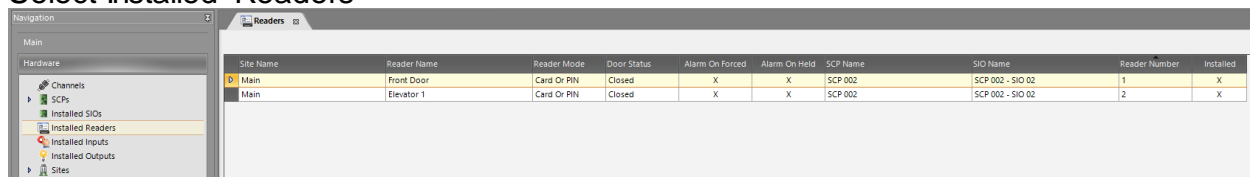
1. Navigate to the hardware tree
2. Expand DVRs
3. Select the name of your DVR system
4. Right click on the camera you want to associate
5. Select Edit
6. Select the reader\input you wish to associate



7. Click Save

Editing the Reader:

1. Navigate to the hardware tree
2. Select Installed Readers



3. Right click on the reader you want to associate
4. Select Edit
5. Select the Integration tab
6. Select the camera you want to integrate from the Associated Camera dropdown field

Edit Reader

Save Close

Reader name: Elevator 1

Site name: Main

General Reader Settings Door Settings Events Integration Biometrics Keypad

Associated intercom station: (None)

Associated camera: Elevator 1

Associated DVR Camera

7. Click Save
8. The workstation needs to be restarted for the changes to take effect

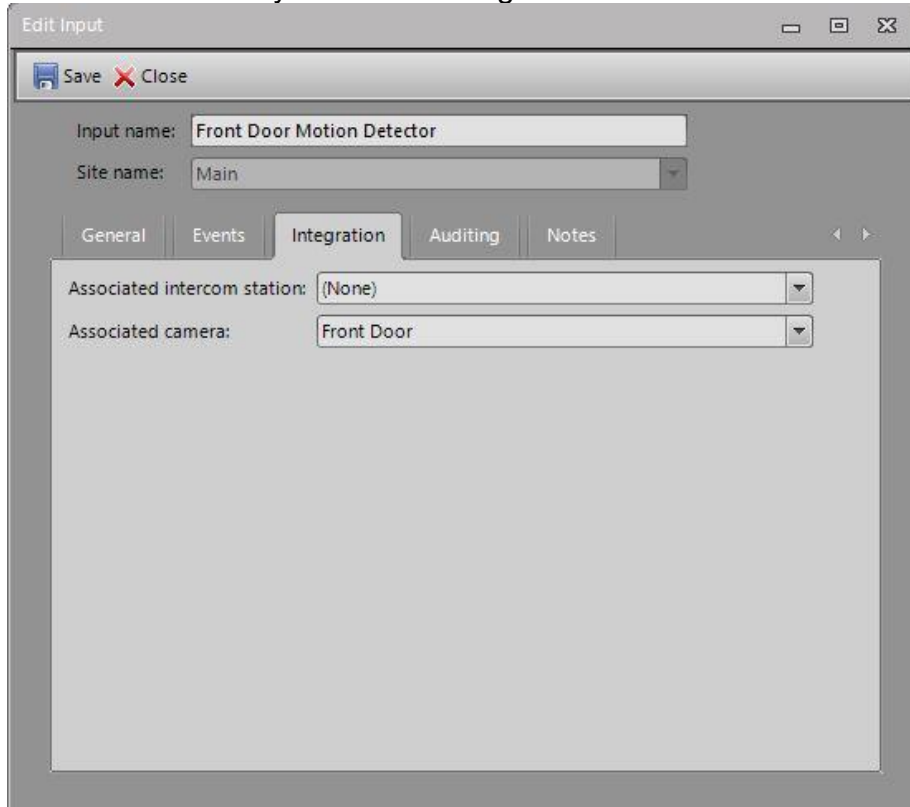
Editing the Input:

1. Navigate to the hardware tree
2. Select Installed Inputs

Inputs							
Site Name	Input Name	Input Status	Enabled	SCP Name	SIO Name	Input Number	Installed
Main	Front Door Motion Detector	Secure	X	SCP 002	SCP 002 - SIO 02	5	X
Main	Lobby Glass Break	Secure	X	SCP 002	SCP 002 - SIO 02	6	X
Main	Back Door Motion Detector	Secure	X	SCP 002	SCP 002 - SIO 02	7	X
Main	IT Closet Motion Detector	Secure	X	SCP 002	SCP 002 - SIO 02	8	X

3. Right click on the input you want to associate
4. Select Edit
5. Select the Integration tab

6. Select the camera you want to integrate from the Associated Camera dropdown field



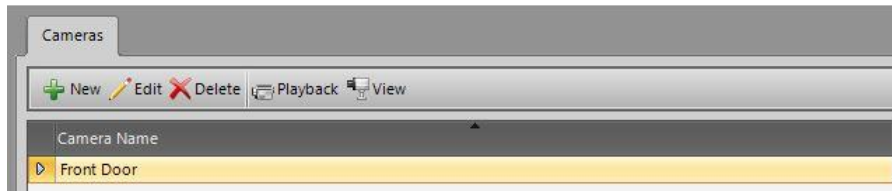
7. Click Save
8. The workstation needs to be restarted for the changes to take effect

Viewing Cameras

Cameras can be viewed by navigating to the camera in the hardware tree, selecting an event from an associating device in the event screen, and by configuring the workstation to automatically open video on an alarm event for an associated device.

Hardware Tree:

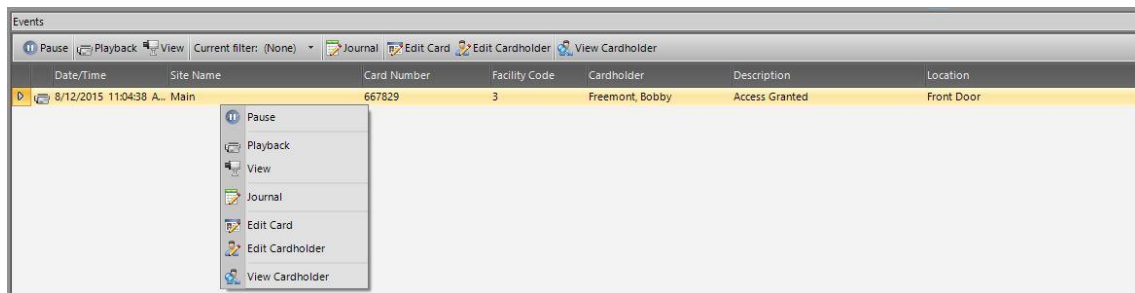
1. Navigate to the hardware tree
 2. Expand DVRs
 3. Select the name of your DVR system
 4. Select the camera you want to view
 5. Click the View Camera button above the hardware tree for a live view
- Or
- Select Playback Segment from the button dropdown list to view a playback segment
- Or
- Right click on the camera, navigate to Commands, and then select either View Camera or Playback Segment



6. The workstation needs to be restarted for the changes to take effect

Events:

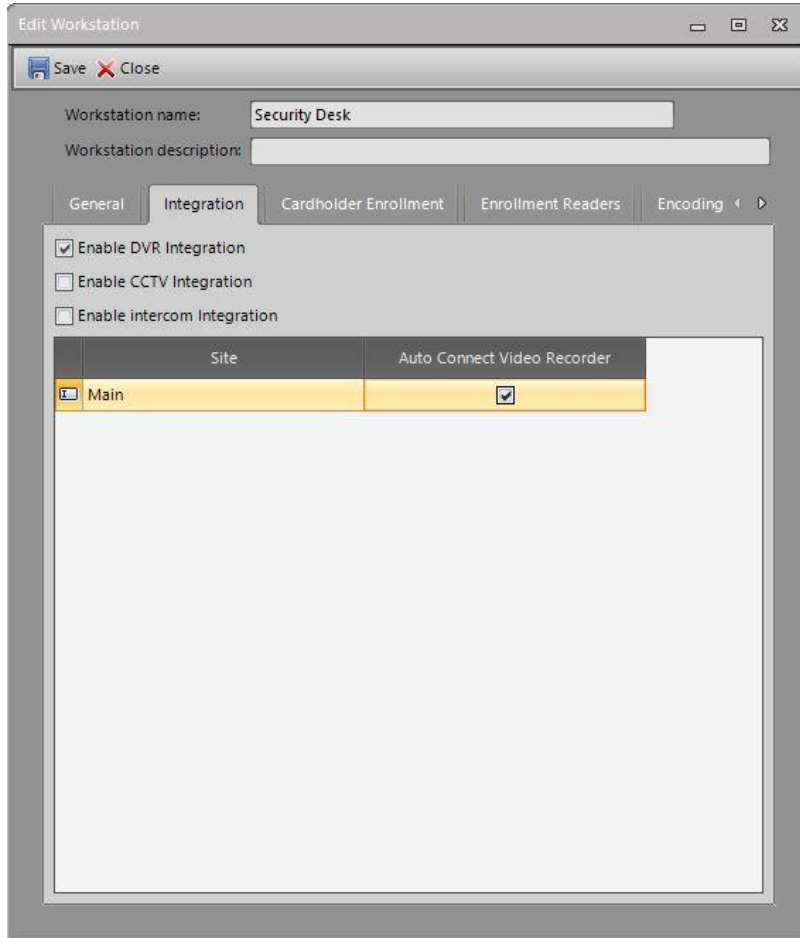
1. When an event occurs on a device associated with a camera, a camera icon will appear next to the event.
2. Clicking the Playback button above the event will show video from that event. Clicking the view button will show a live view of that associated camera
or
Right clicking on the event will bring up a menu to select either Playback or View



Automatic Connect on Alarm:

1. Select the System tab
2. Select Workstations
3. Edit the workstation to enable the auto connect on alarm feature
4. Select the Integration Tab
5. Check the Auto connect on alarm checkbox for the site(s)

6. Click save



7. The workstation needs to be restarted for the changes to take effect

Uninstalling Software

1. From the Add or Remove Programs Menu, select RS2 American Dynamics Viewer and then click Uninstall
2. Click Yes to the 'Are you sure you want to remove RS2 American Dynamics Viewer from your computer?' message box
3. From the Add or Remove Programs Menu, select the ADSDK Redistributable and click Uninstall/Remove